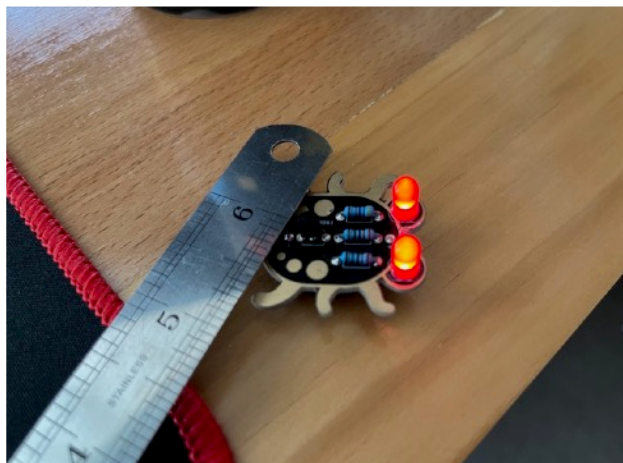




WEEVIL LIGHT UP EYES PCB KIT



A very simple learn to solder kit that you can put together in minutes. Once put together and a battery inserted, the weevil will stay in the off state if the lights are on. Once lights go out however, it's red eyes will light up.

SKU: PCB-WEEVIL

Product link: <https://k-retro.com/diy-pcb-kits/137-weevil-light-up-eyes-pcb-kit.html>

We sell kits, replacement parts, tools and soldering consumables at our online store at k-retro.com

Kit Contents

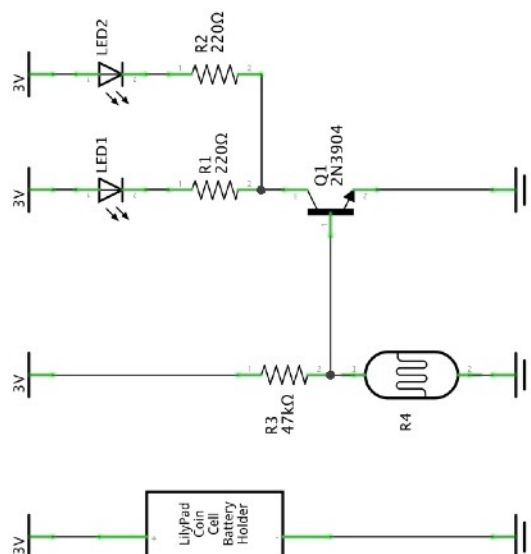
1x 47k Ω resistor
2x 220 Ω resistor
1x photo resistor
1x 20mm coin cell holder

1x 2N3904 transistor
2x Red LED
1x WeevilEye PCB

Required Tools and Consumables

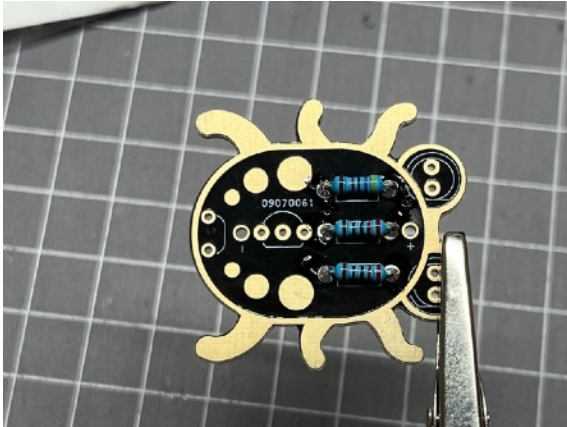
Soldering Iron, Side Cutters, Solder (with flux).

Schematic



Assembly Instructions

1. Make sure you have all of the components listed in **Kit Contents**.
2. Solder in the resistors.
Start by bending resistor legs at 90 degrees to the resistor and pushing them through the appropriate locations on the PCB.
Bend the legs to secure the resistors in place.
Solder the resistors on the bottom side of the PCB (where the legs are poking through).
Cut excess legs off the resistors.



Hint - use a multimeter to check the value of the resistor first.

Hint - resistors can go into the board either way, there is no positive or negative side.

Resistor colour codes:

- | | |
|---------------|-------------------------------------|
| 220Ω resistor | - red, red, black, black, brown |
| 47kΩ resistor | - yellow, purple, black, red, brown |

3. Solder in the photo resistor, transistor and LEDs.

The LEDs, transistor and photo resistor will need to have excess legs cut off.



Hint - the transistor and the LED orientation is important and their outline is drawn on the PCB, simply match the flat parts and it will be oriented correctly.

4. Solder in the coin cell battery holder.

Make sure the other components' legs are cut down flush with the PCB so that the battery holder can sit flush too. The battery holder is soldered in on the bottom side of the PCB.



6. Insert a CR2032 coin battery cell into the battery holder.

Usage

The weevil eyes light up when it gets dark. The darker it is, the brighter do his eyes glow.