

A touch module works just like a momentary button and can be placed under plastic parts to trigger and switch PCBs on/off.

SKU: MOD-TOUCH

Product link: <https://k-retro.com/atari-lynx-consolizer-kits/33-touch-module-and-wiring.html>

We sell kits, replacement parts, tools and soldering consumables at our online store at [k-retro.com](https://k-retro.com)

## Kit Contents

1x Touch module PCB

3x Mod wire

## Required Tools and Consumables

Soldering iron, side cutters or wire stripper, scalpel or utility knife, sand paper

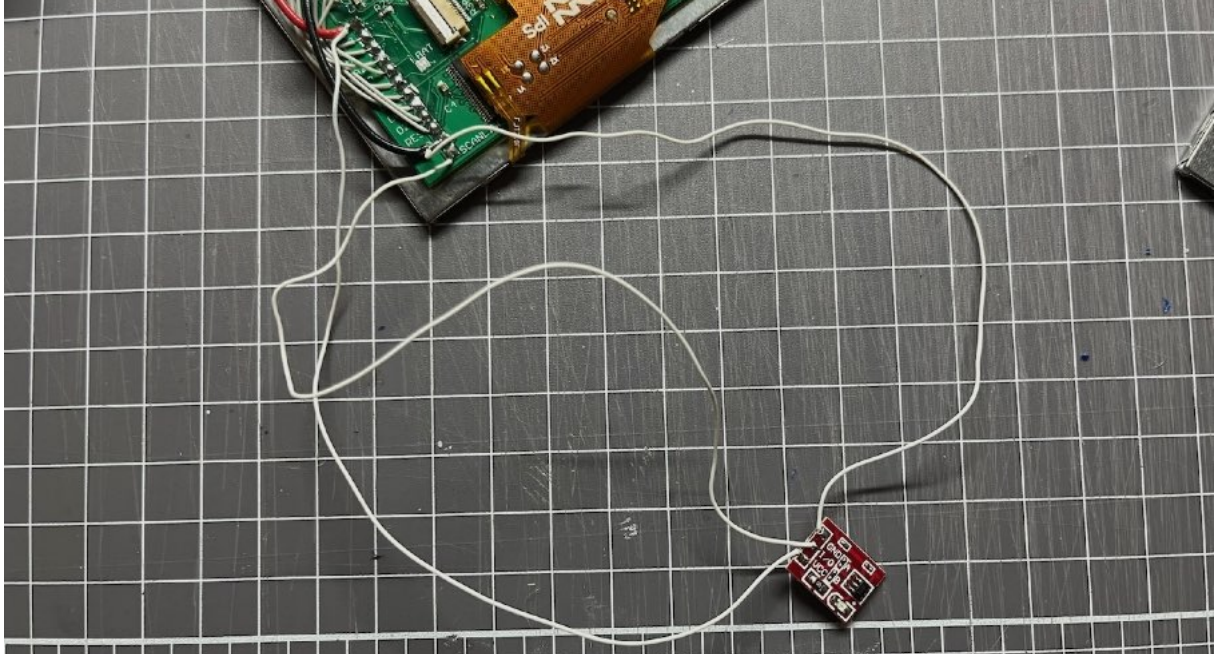
## Assembly Instructions

1. This manual assumes you followed our disassembly guide and your Lynx is already taken apart. The intended use of this touch module is to trigger scanline and VGA features on/off for the BennVenn LCD kits sold from our store.

If you have a rare Lynx model 1 that has conductive coating (silver coloured coating) on the inside of the plastic shell, it is likely the touch sensor will not work and you will need to use a physical push button instead.

2. The touch module is connected to the LCD PCB only. The table below outlines which pads need to be connected between the touch module and the LCD PCB. Strip the mod wires at each end and solder to the corresponding pads.

LCD PCB	Touch Module PCB
GND	GND
SCANLINE	I/O
5V	VCC



**3.** Find a suitable spot on the inside of your Lynx to place the touch module. It is recommended to attach it either along the top or bottom edge (when holding the Lynx screen side towards you).

**4.** If there is the silver conductive coating around the area you wish to place the touch sensor, this coating needs to be scraped off. A scalpel or utility knife can scrape this coating off easily. You may also want to sand the area to help remove more of the coating. If the coating is not removed completely, the touch sensor will not work.

**5.** Peel back the double sided tape on the touch module and attach it to the Lynx shell.