

Lynx power sockets are prone to breaking, replace them with this new component.

SKU: LNX-SOCKPWR

Product link: <https://k-retro.com/atari-lynx-replacement-parts/49-lynx-power-socket.html>

We sell kits, replacement parts, tools and soldering consumables at our online store at k-retro.com

Kit Contents

1x Power Socket

Required Tools and Consumables

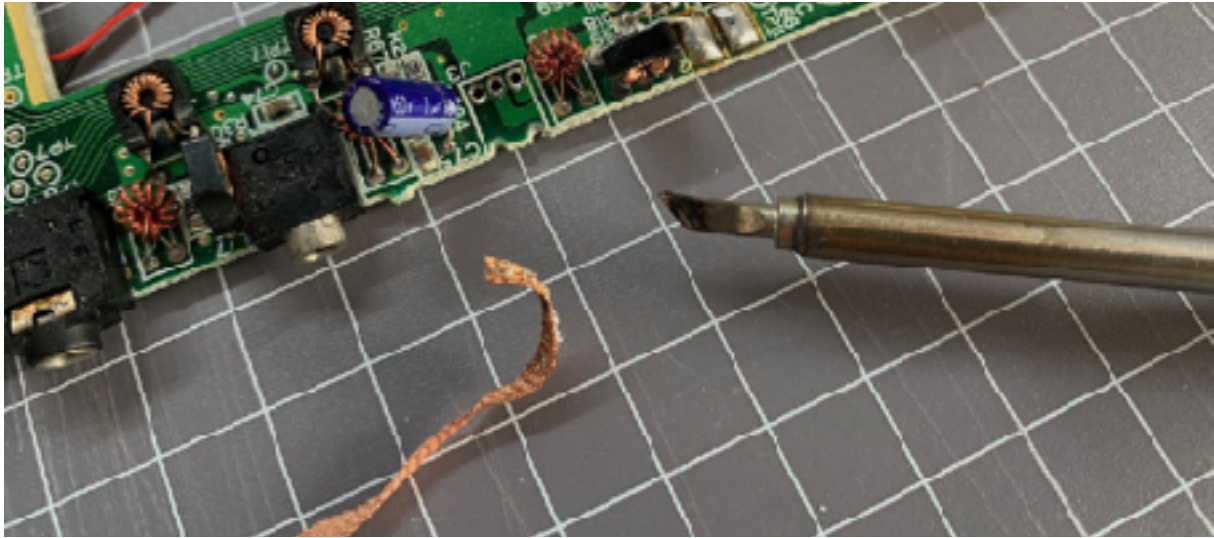
Soldering Iron, Solder Braid, Side Cutters, Needle-nose Pliers, Isopropyl Alcohol

Assembly Instructions

1. This manual assumes you followed our disassembly guide and your Lynx is already taken apart. This manual describes how to replace the power socket on an Atari Lynx. We use a model 1 Lynx for demonstration purposes but the same concepts apply to model 2.
2. The power socket is located on the top side of the Lynx motherboard. There is usually hot glue blobs helping to hold the socket in place. These need to be removed using side cutters or needle nose pliers. Once removed, the socket should only be held on by its three pins.



3. Desolder the power socket. Flip the Lynx motherboard around to the bottom side and either using a desolder gun or desoldering braid, remove the solder around the three pins that secure the power socket. Be careful to not lift any traces.



4. Solder in the new socket. Push the new socket in, use some Blu-Tac (or similar) to hold it in place, then solder its legs into the motherboard. Trim the legs if required. Then using some IPA clean any remaining flux residue.

