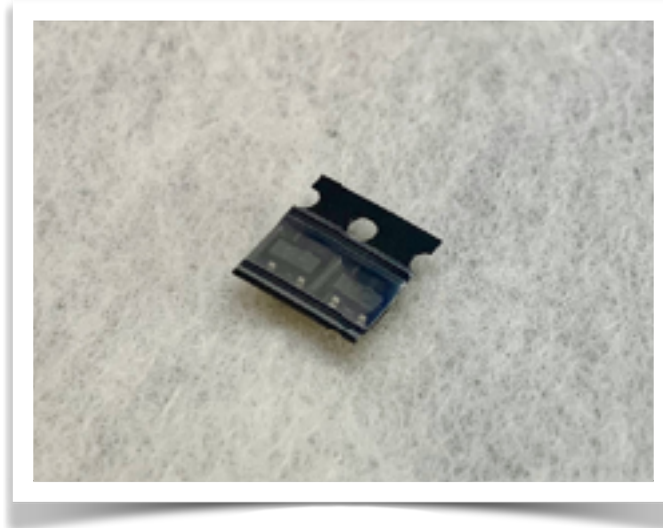




PAIR OF REPLACEMENT 3906 TRANSISTORS



The 3906 transistors are part of the Atari Lynx power circuit that can sometimes fail, replace them before it's too late.

SKU: LNX-3906

Product link: <https://k-retro.com/atari-lynx-power-capacitor-and-nimh-kits/50-pair-of-replacement-3906-transistors-for-atari-lynx.html>

We sell kits, replacement parts, tools and soldering consumables at our online store at k-retro.com

Kit Contents

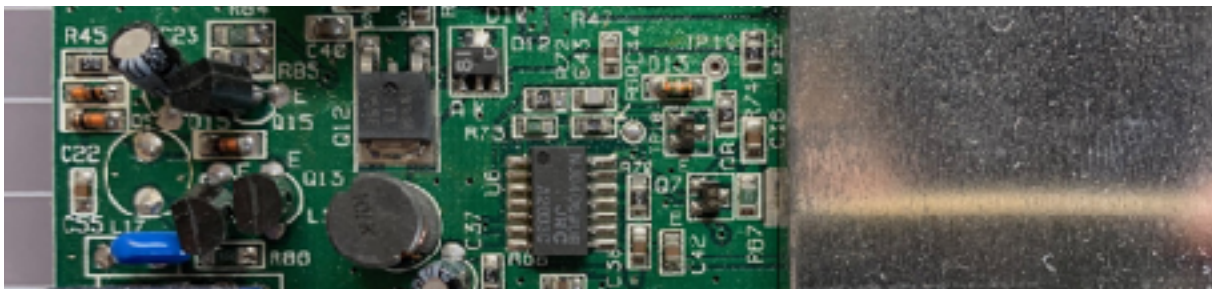
2x 3906 transistors

Required Tools and Consumables

Soldering Iron, Solder Braid, Side Cutters, Tweezers, Isopropyl Alcohol (IPA)

Assembly Instructions

1. This manual assumes you followed our disassembly guide and your Lynx is already taken apart.
2. Between the model 1 and 2, the 3906 transistors have been named differently and appear in different locations on the motherboard. In both cases you can easily find these transistors by looking for them near the power socket. Below are the components names assigned to the two Lynx models.
 - Lynx 1 - Q4 and Q13
 - Lynx 2 - Q7 and Q8



Hint - the transistor and the LED orientation is important and their outline is drawn on the PCB, simply match the flat parts and it will be oriented correctly.

3. Remove the original 3906 transistors. Use side cutters to snip off the two legs of each of the transistors where the legs are side-by-side. Then you can easily desolder these with a standard soldering iron. Desolder the remaining leg next.

Another trick to removing the transistors is to simply get a nice glob of solder on your iron so that you can make contact with both sides at the same time and then slide the transistor off sideways from the pads.



4. Clean up components pads. Use solder braid to clean up any remaining solder residue on the pads for each transistor.



5. Solder in new transistors. Position the new transistors on the motherboard - using tweezers will help here. Solder one of the legs on each transistor, then once the first leg is soldered on, you no longer need the tweezers and can solder the remaining legs. Once everything is soldered in, use some IPA to clean up the flux residue.

