



Atari Lynx model 1



This is a guide on how to disassemble an Atari Lynx model 1 console.

We sell kits, replacement parts, tools and soldering consumables at our online store at k-retro.com

Required Tools and Consumables

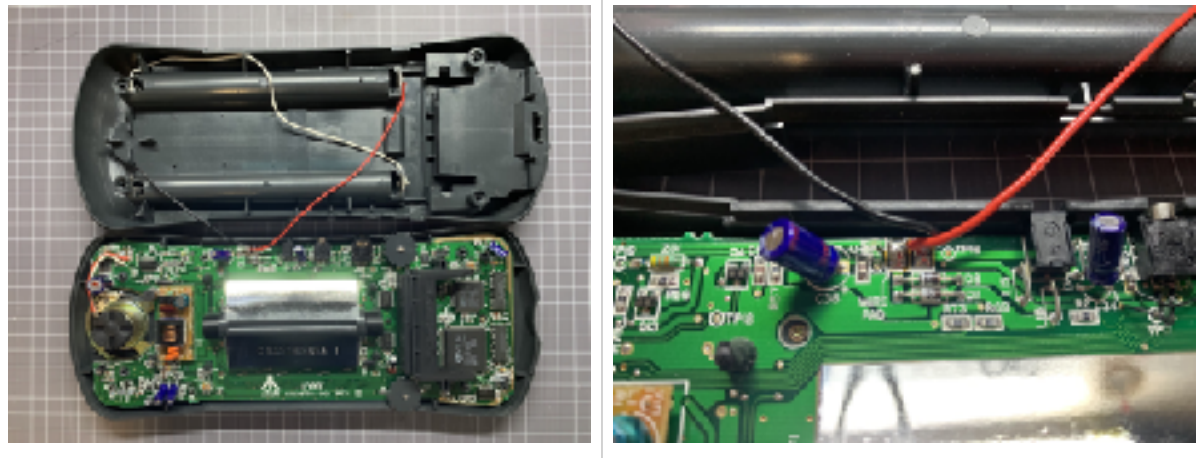
Medium Phillips screwdriver, small Phillips screwdriver, soldering iron.

Disassembly Instructions

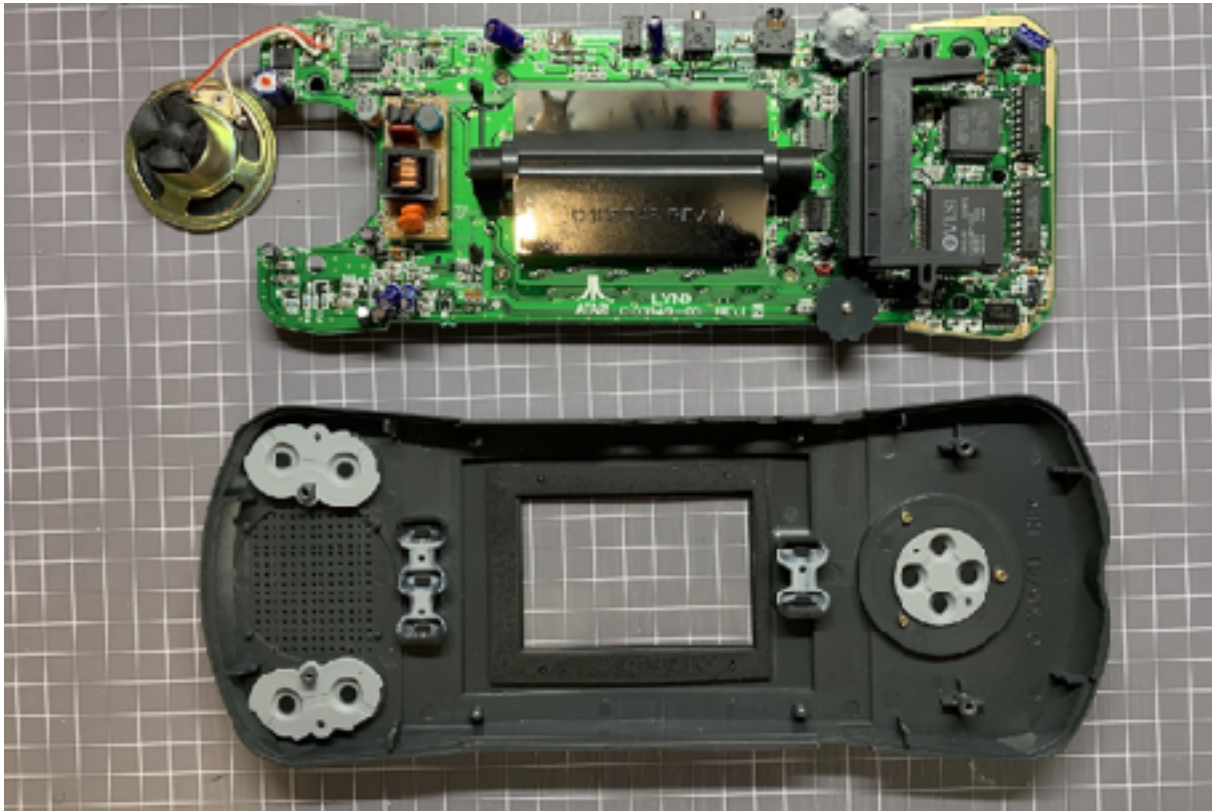
Step 1 - Using a Phillips type screwdriver, unscrew the four screws on the back of the Lynx. There is a pair of longer screws (left side) and a pair of shorter screws (right side).



Step 2 - Carefully lift the back part of the Lynx like a clamshell, lifting the part closest to you first. There will be two wires for the battery contacts soldered to the motherboard. Desolder these.



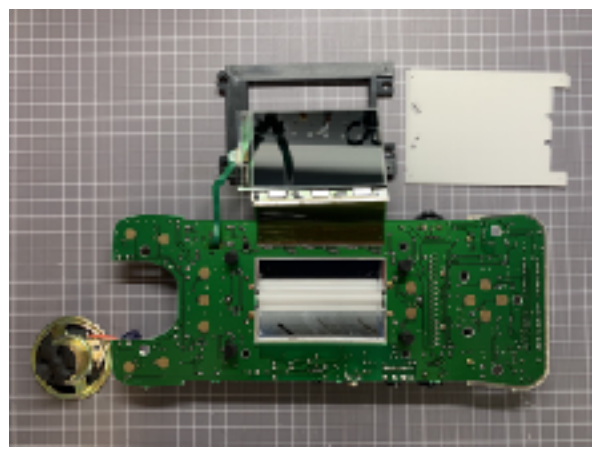
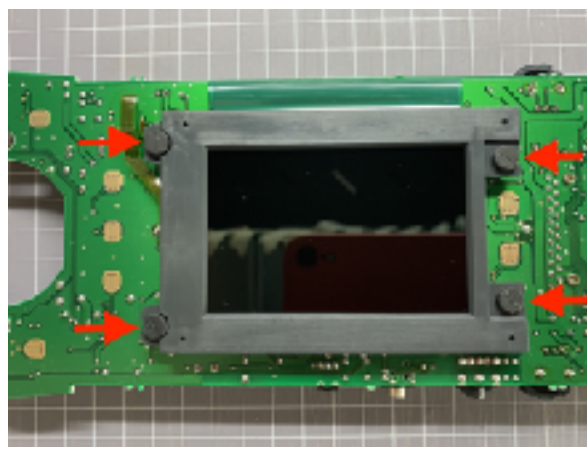
Step 3 - The Lynx motherboard can be lifted out of the front case section now. Careful to remove the button pads, they tend to stick to the motherboard. The speaker does not need to be desoldered as it will not get in the way and can be lifted out with the motherboard.



Step 4 - The screws that are holding the screen assembly in place can be removed next using a Phillips style screwdriver.



Step 5 - Flip the motherboard over and pull the rubber supports that hold the screen in place to the sides. The screen can be lifted up now, the backlight diffuser will come out at the same time.



Step 6 - Remove the two screws that hold the CF tube reflector in place using a Phillips type screwdriver.

